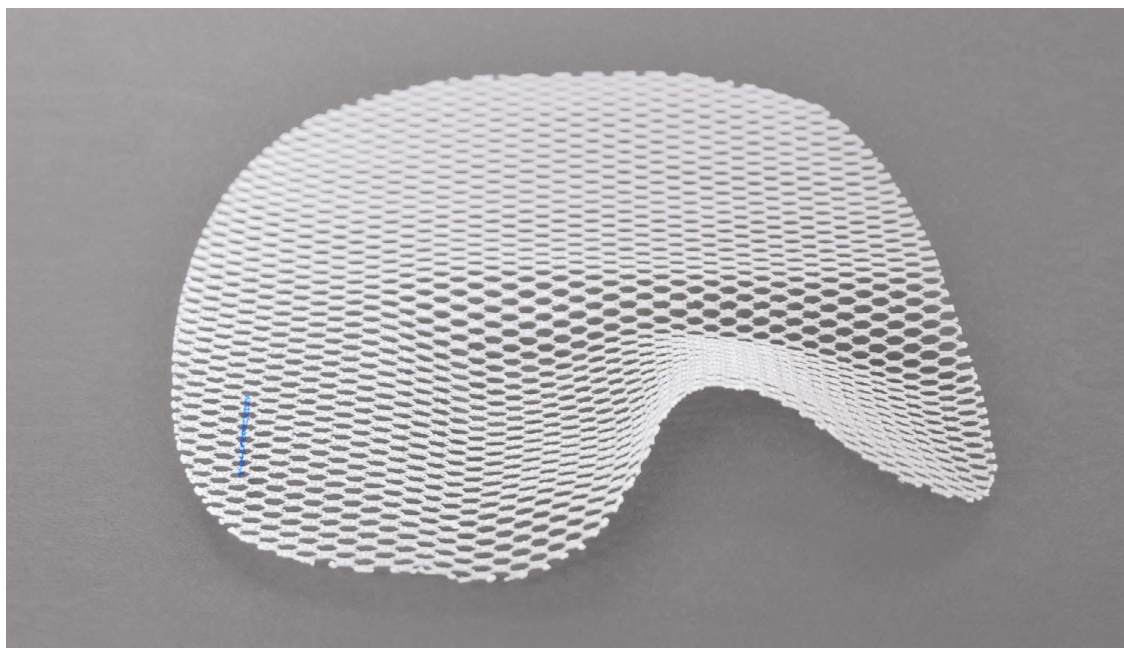




4DMESH

Tissue healing makes the difference

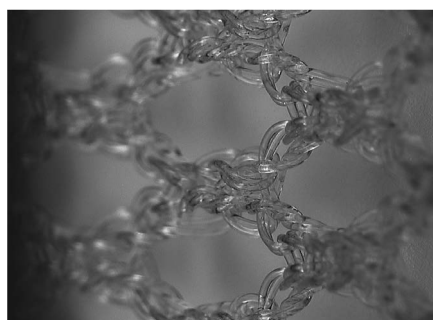
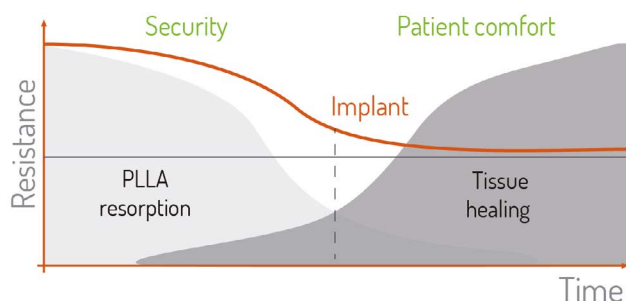


Early strength
Long-term safety and comfort
Optimised fibrosis

TISSUE HEALING MAKES THE DIFFERENCE

4DMESH is a hydrophilic partially resorbable implant, designed for the treatment of inguinal hernias by open and laparoscopic approach.

PRODUCT'S KEY POINTS



75% PLLA

Early **strength** and long-term **comfort**

The 4DMesh concept lies in the 75% PLLA resorption which initially provides maximal strength to prevent early recurrences and in the long-term, leaves small amount of material thus persistent tensile strength for patient comfort⁽²⁾.

Optimised fibrosis⁽¹⁾

PLLA combined to polypropylene leads to an absence of mesh shrinkage and lower inflammation, leading to better tolerance compared to 100% polypropylene meshes.

The in-vivo animal study also shows earlier and higher amount of collagen fibers, thus an earlier support for abdominal wall repair.

Easy to place⁽²⁾

Specifically in laparoscopy, thanks to the hydrophilic attribute of PLLA that holds the mesh in place against the abdominal wall.

Monofilament polypropylene
+ resorbable PLLA

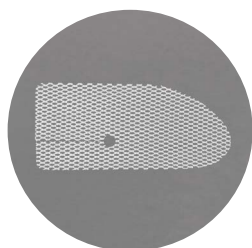


Monofilament polypropylene

Time

> A FULL PRODUCT RANGE

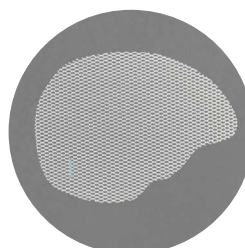
LICHTENSTEIN



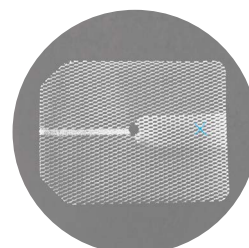
TAPP / TEP



Pre-shaped



Pre-cut



Flap

> MATERIAL

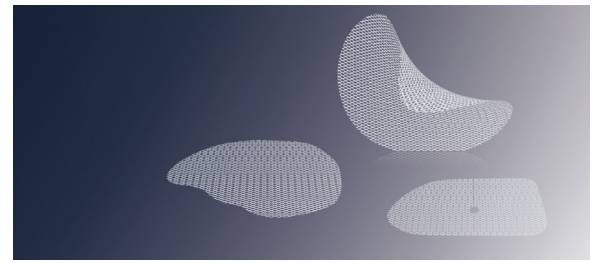
75% PLLA - resorbable / 25% polypropylene - non resorbable

(1) Tanaka K., Mutter D., Inoue H., Lindner V., Bouras G., Forgione A., Leroy J., Aprahamian M., Marescaux J. In Vivo evaluation of a new composite mesh 10% Polypropylene/90% Poly-L-Lactic Acid for Hernia Repair. J Mater Sci: Mater Med 2007 ; 18 : 991-999. Animal study.

(2) Preliminary results from ongoing multicenter 4DMesh® clinical study - Club Hernie registry.

4DMesh®

Semi-resorbable parietal reinforcement implant



Product description:

Monofilament polypropylene and poly-L-lactic acid (PLLA) knit.

Products are sold in a double pouch and packaged in a box. They are ethyl oxyde sterilised, CE marked, class III, semi-resorbable. No animal nor human origin.

Indications:

For the parietal treatment and reinforcement of inguinal and femoral hernias.

References and sizes:

		Lichtenstein		
		Flap	Precut	
	Shape	Reference		Description and size (cm)
		FBIO SR F128		Pre-cut mesh with flap 12 x 8
		4DMESH M613		Pre-cut mesh with slit 6 x 13,5
		4DMESH F812		Pre-cut mesh 8,5 x 12,5
		4DMESH MBES		Pre-cut mesh with slit 12 x 5
		4DMESH MBEL		Pre-cut mesh with slit 7 x 13
	Shape	Reference		Description and size (cm)
		4DMESH RABA		Pre-cut mesh with flap 11 x 14
		4DMESH 1215		Oval mesh 12 x 15
		4DMESH 1317		Oval mesh 13 x 17
		4DMESH 1216		Pre-cut mesh 12 x 16,5
		4DMESH 1717		Mesh 17 x 17
		4DMESH PRSR		Right pre-shaped mesh 10,5 x 14
		4DMESH PRSL		Left pre-shaped mesh 10,5 x 14
	Shape	Reference		Description and size (cm)
		4DMESH PRLR		Right pre-shaped mesh 12 x 15
		4DMESH PRL		Left pre-shaped mesh 12 x 15
		4DMESH PRLR		Right pre-shaped mesh 12 x 15
		4DMESH PRL		Left pre-shaped mesh 12 x 15

Technical characteristics:

Characteristics	4DMesh
Material	75% Monofilament PLLA 25% Monofilament polypropylene
Weight before resorption	120 ± 10 g/m ²
Weight after resorption	30 ± 10 g/m ²

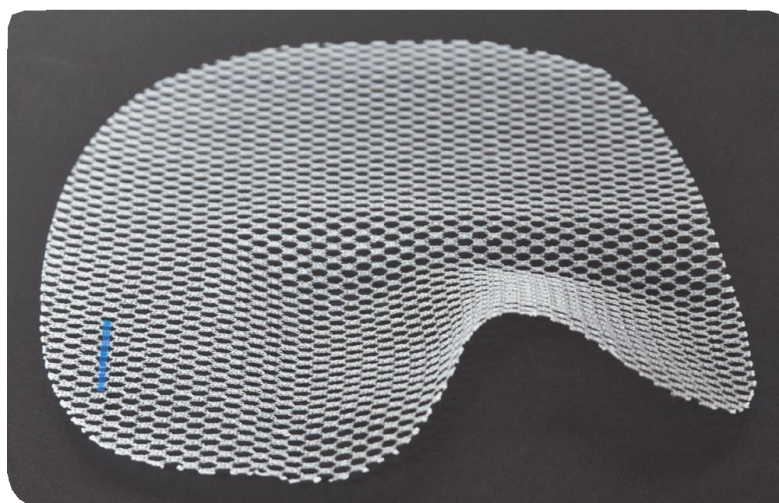
REY MEDICAL SA: YOUR PARTNER IN SURGERY

• QUALITY • SECURITY • ECONOMY

Visit our website: www.reymedical.ch or call us: 022 743 24 10

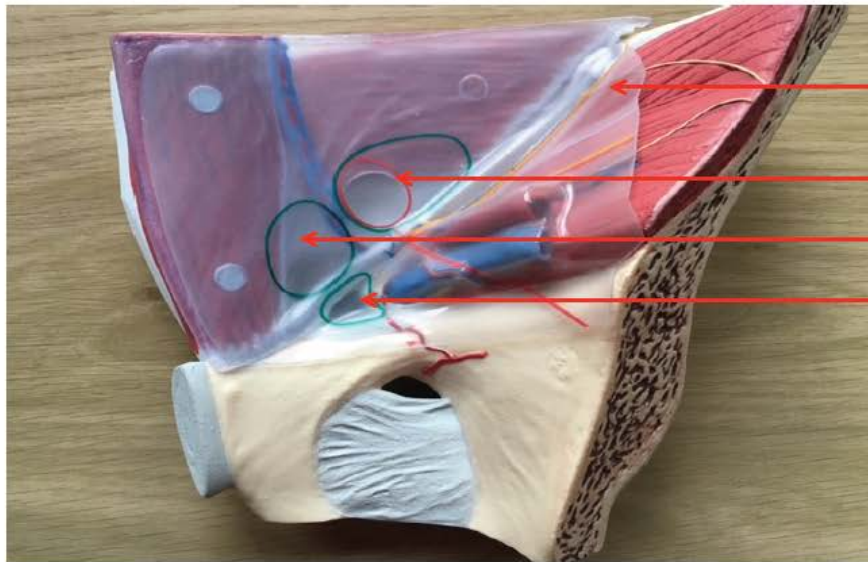


For laparoscopic inguinal hernia repair



Reference	Description	Size (cm)
4DMESH PR SR	Preshaped Small Right	10,5x14
4DMESH PR SL	Preshaped Small Left	10,5x14
4DMESH PR LR	Preshaped Large Right	12x15
4DMESH PR LL	Preshaped Large Left	12x15
4DMESH PR XR *	4DLapXL Preshaped Extra Large Right	12x17
4DMESH PR XL *	4DLapXL Preshaped Extra Large Left	12x17

Laparoscopic view of the inguinal anatomy of a patient's right side



- Peritoneum
- Indirect hernias
- Direct hernias
- Femoral hernias



4DLapXL's anatomical shape perfectly covers the 3D inguinal floor and largely covers all sites for inguinal and femoral hernias

¹⁾ Tanaka K., Mutter D., Inoue H., Lindner V., Bouras G., Forgione A., Leroy J., Aprahamian M., Marescaux J. In Vivo Evaluation of a New Composite Mesh 10% Polypropylene/90% Poly-L-Lactic Acid for Hernia Repair. J Mater Sci: Mater Med 2007 ; 18 : 991-999.

The semi-resorbable parietal reinforcement implants brand named 4DMesh®, are dedicated to healthcare professionals having the ability to use this type of product for the therapeutic treatment of inguinal and femoral hernias. 4DMesh is a class III medical device manufactured by COUSIN BIOTECH. Their evaluation and conformity have been carried out by SGS0120.

The management system of COUSIN BIOTECH has been certified as meeting the requirements of ISO 13485.

Please read instructions for use carefully.

Reference: FY4DXLGB01 - 04/05/17

REY MEDICAL SA: YOUR PARTNER IN SURGERY

• **QUALITY** • **SECURITY** • **ECONOMY**

Visit our website: www.reymedical.ch or call us: 022 743 24 10